



MCX4 4.4kW

Product code: 27400

Capacity: Commercial

Mini single point of use, electronically controlled instantaneous water heater incorporating user lockable touch temperature control complete with water saving low flow aerator. This appliance delivers water not exceeding 45°C in accordance with AS3498.

Specifications

Product name	MCX4 4.4kW
Product code	27400
Product approvals	WaterMark, CE,
Warranty	Commercial usage 12 months. Residential usage 5 years

Capacity, weight & dimensions

Dimensions	H135mm x W186mm x D87mm
------------	-------------------------

Plumbing

Water connection	12.7mm BSP
Water pressure	Min 200kPa - Max 1000kPa

Electrical

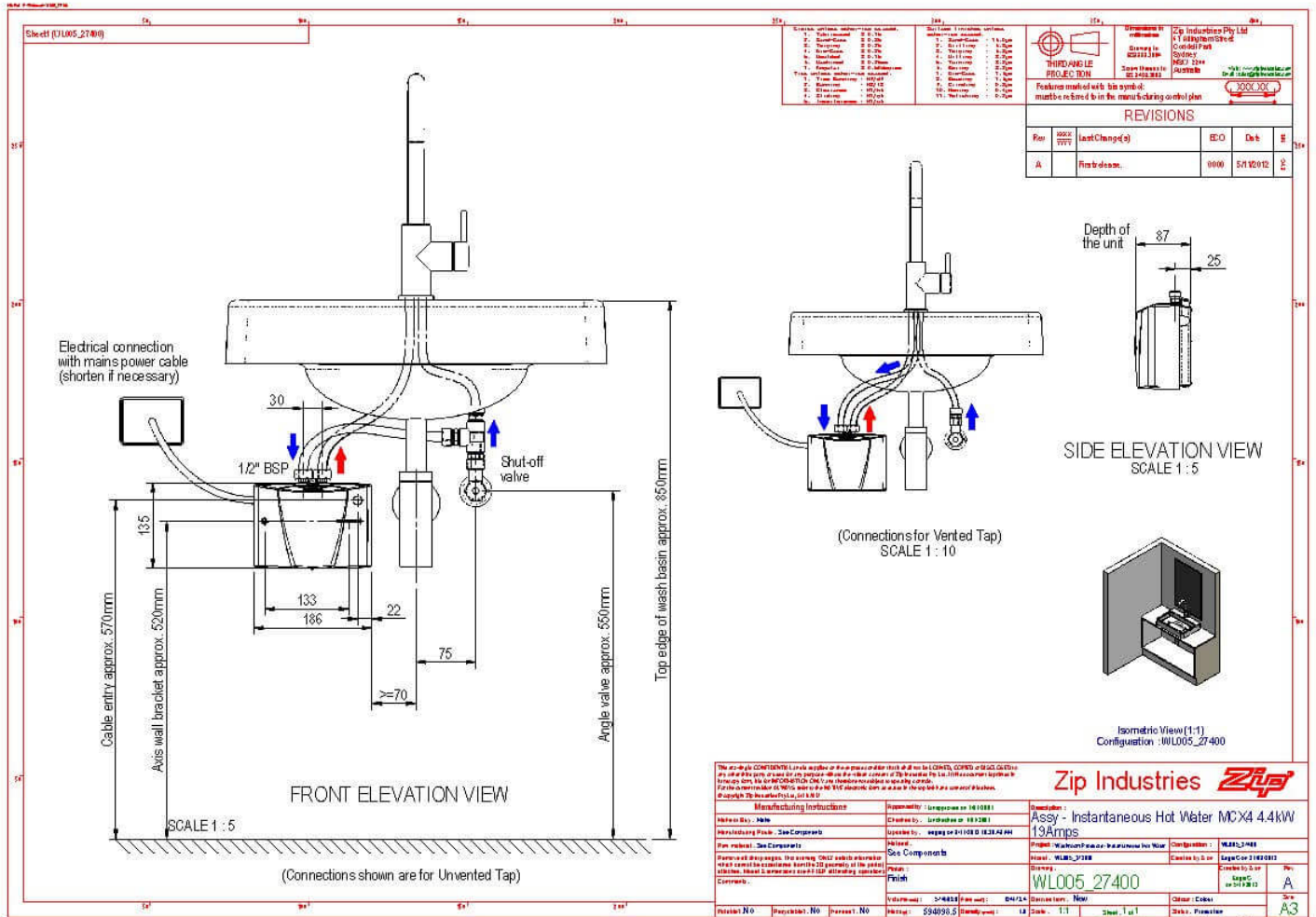
Power rating	4.4kW 220-240V 50/60 Hz
--------------	-------------------------

Installation

Installation requirements

- Automatic product selection is no substitute for planning by an expert, please consult with your local Zip representative to ensure the product you have chosen is suitable for its intended application.
- Instantaneous water heaters require dedicated high Amperage Single or Three phase power supplies, please consult with you electrician or electrical design engineer to ensure you have the correct power supply available for the product you have selected.
- Must be installed by a suitably qualified person in accordance with manufacturers instructions and with all relevant plumbing and electrical regulations.

Files



Installation layout (PDF)

BIM files

BIM

Certifications



Environment
ISO 14001



OHS
ISO 45001



Quality
ISO 9001



↓ Environment ISO
(PDF)



↓ Health & safety
(PDF)



↓ Quality ISO (PDF)

Manuals & brochures



↓ Brochure (PDF)



↓ Instruction manual
(PDF)

↓ Download all